

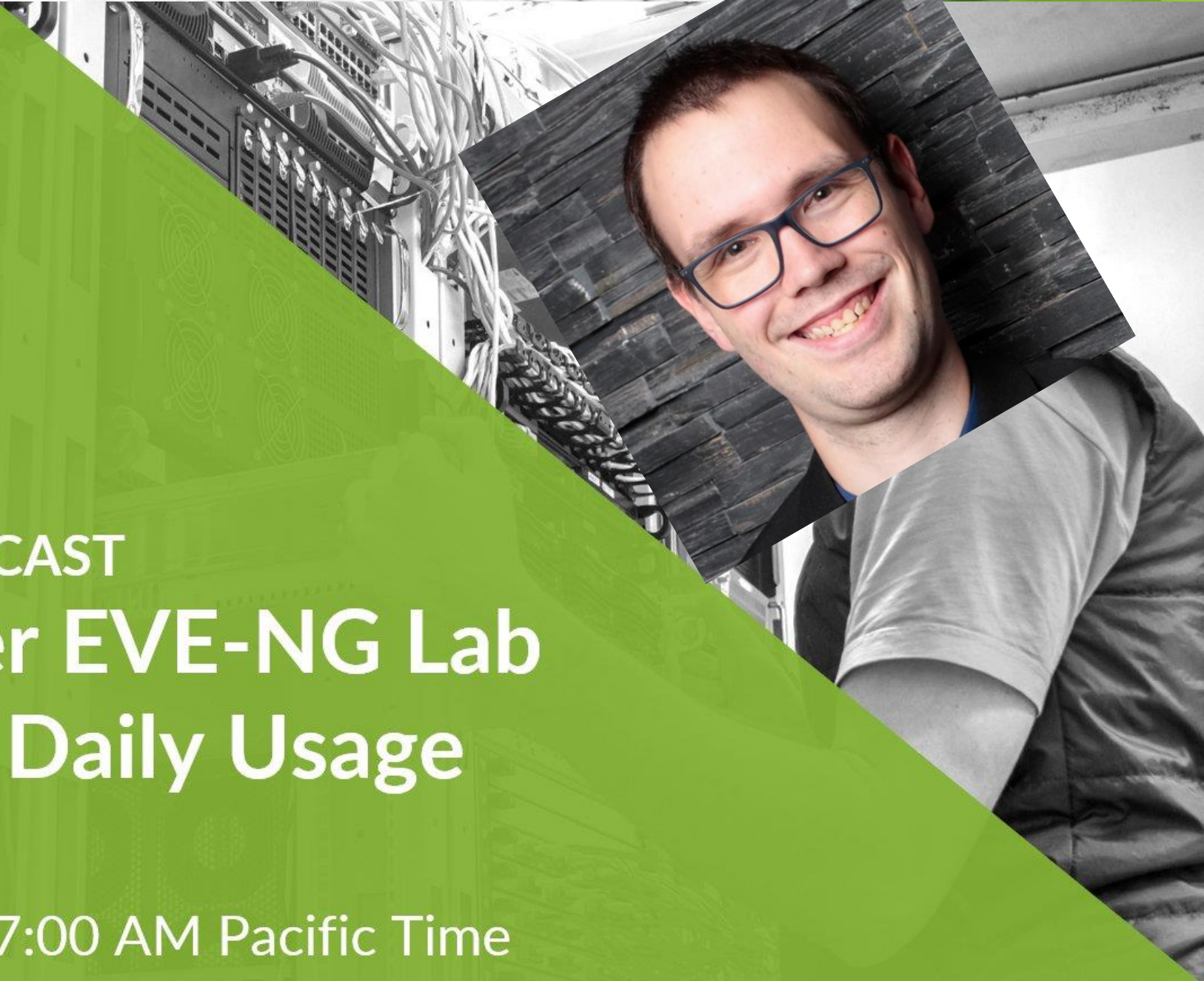


Juniper Open Learning

TECHNICAL SERIES WEBCAST

Building a Juniper EVE-NG Lab Environment for Daily Usage Part 1/3

Wednesday, February 9th, 7:00 AM Pacific Time



About:

Christian Scholz ( @chsjuniper)

„That guy who loves Juniper and IPv6“

Sr. Consultant - Network & Security
[Axians Networks & Solutions]

JNPR Ambassador | JNCIE-SEC #374

Blog: www.jncie.eu

Mail: chs@ip4.de

Youtube: www.youtube.com/netchron/

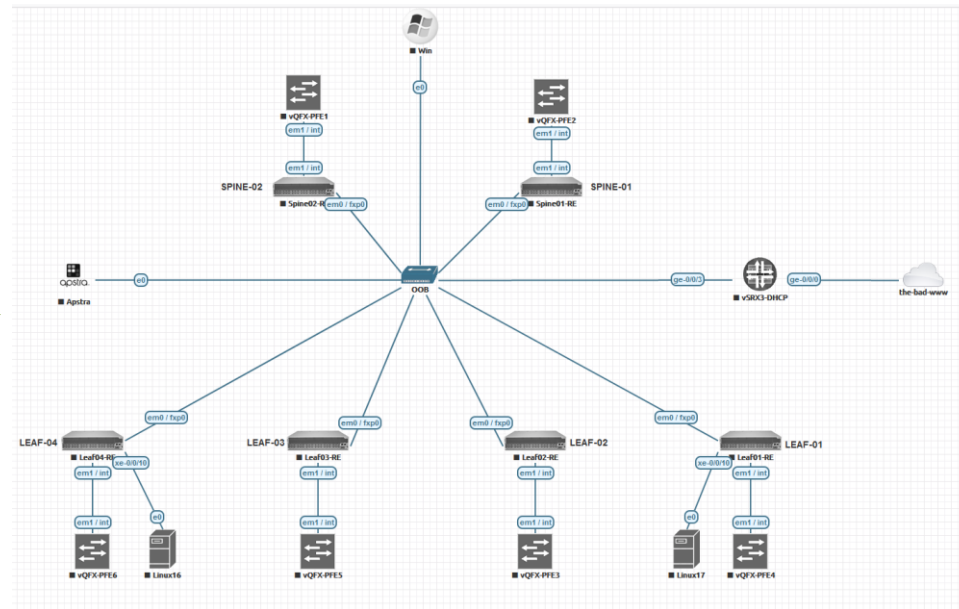
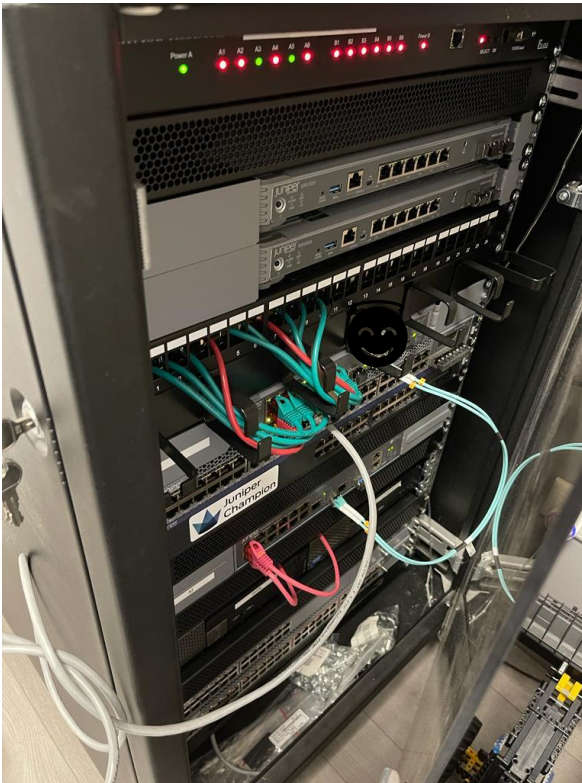


The background features abstract, overlapping green geometric shapes, primarily triangles and polygons, in various shades of green, creating a modern and dynamic visual effect.

Why EVE-NG? | Why Virtual Labs?

Why EVE-NG | Why Virtual Labs

Save Power / Rackspace

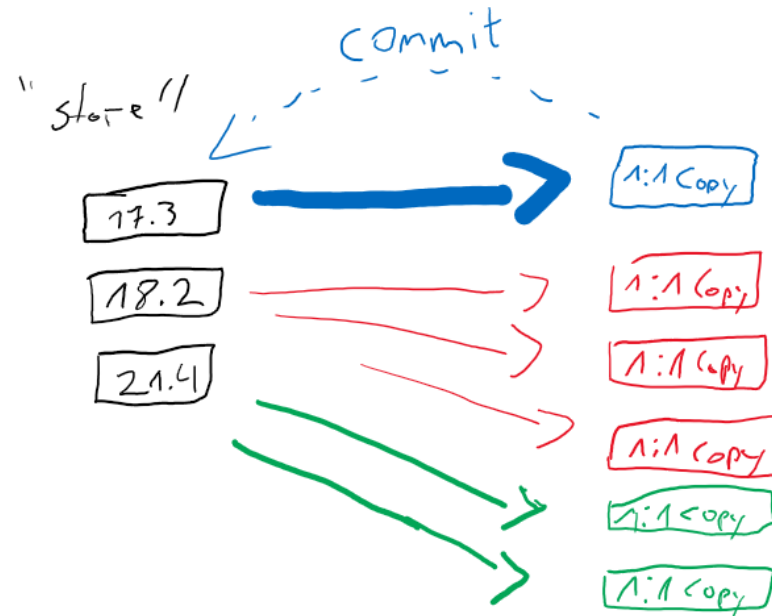


Why EVE-NG | Why Virtual Labs

- ▶ Quickly Lab / Test a new Design
- ▶ GREAT for Certification 😊 → Combine with vLabs and AATP
- ▶ Get started for free with the Community Edition
- ▶ Vendor-Neutral! No Focus on a particular Vendor
- ▶ Extremely Flexible (Bare-Metal, VM | On-Prem | Colocation | Cloud)

Design Considerations - Planning a Lab

- Number of nodes (**CPU**, RAM, **HDD**):
For each node, we „copies“ the image and therefore needs harddisk 😊



Design Considerations - Planning a Lab

- ▶ Number of nodes (**CPU**, RAM, **HDD**):
For each node, eve „copies“ the image and therefore needs harddisk 😊
- ▶ Number of images on EVE host | „Data Grave“ | Clean Policy
- ▶ Number of needed satellites - are any needed? Clustering needed?
Pro needed? VM or Bare?

Flavors?

- ▶ Ubuntu installed on BMS



- ▶ ESXi installed on BMS and EVE as VM inside ESXi

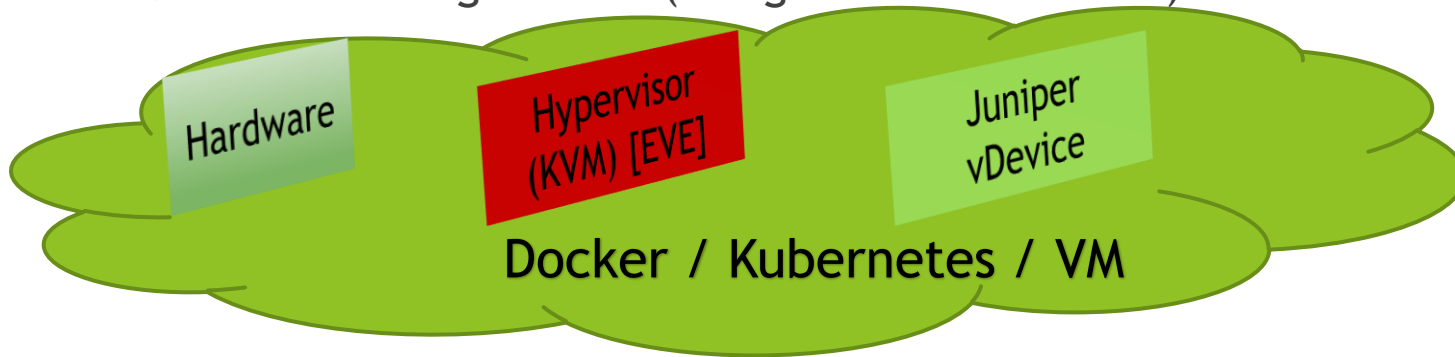


- ▶ Windows Client running VMwareWorkstation, running EVE (EVEception)



Flavors?

- ▶ EVE running on GCP (Google Cloud Platform)



What is the EVE Cluster?

- ▶ Group of EVE-Servers „sharing“ resources for Labs / Topologies
- ▶ Master instance and Satellites
- ▶ Satellites are controlled Master node
- ▶ Login via master-node
- ▶ No „drive-by listeners“ - Secured by wireguard
- ▶ Running vxlan-tunnels between nodes



What do I need?

- ▶ Valid Pro License (Clusters are Pro only)
- ▶ Network Ports opened between the master and the satellites

15.2.1 Firewall rules between Master and Satellite nodes

Node	Protocol	Port	Direction	Source	Destination
MASTER	TCP	22	ingress and egress	MASTER node IP	SATELLITE nodes IPs
MASTER	UDP	all	ingress and egress	MASTER node IP	SATELLITE nodes IPs
SATELLITE	TCP	22	ingress and egress	SATELLITE node IP	MASTER Node IP
SATELLITE	UDP	all	ingress and egress	SATELLITE node IP	MASTER Node IP



- ▶ Working DNS

Flavors?

- ▶ EVE Hybrid (run multiple flavors of eve in a cluster)

EVE MASTER Bare Node



EVE SAT1 VM Node



EVE SAT VM Node on GCP



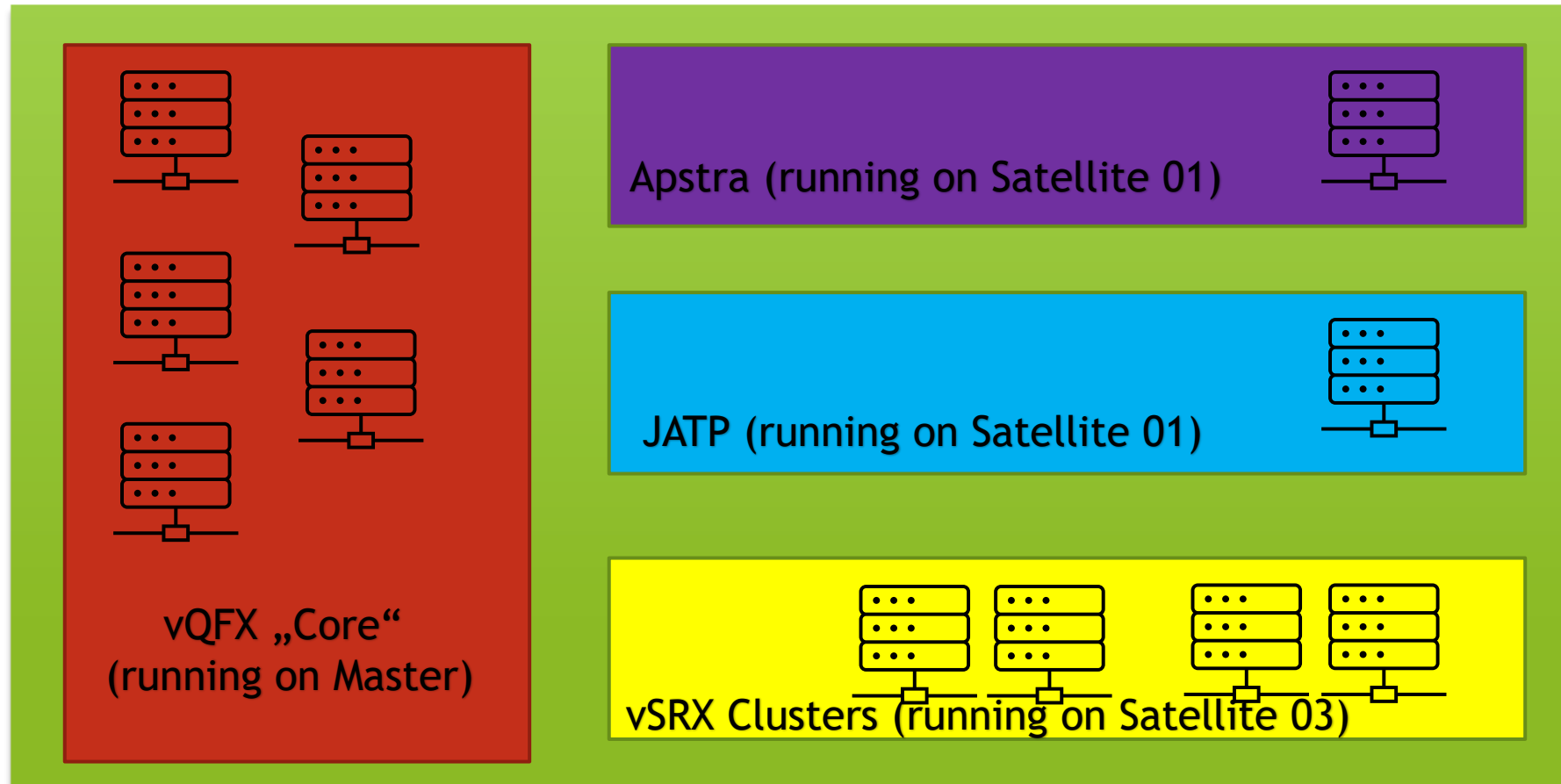
EVE SAT VM Node



Laptop

- ▶ Allows for easy scaling the Lab (need more resources? Throw more servers in)
- ▶ Allows part of your huge nodes to run on different servers (Space, Apstra, JATP)

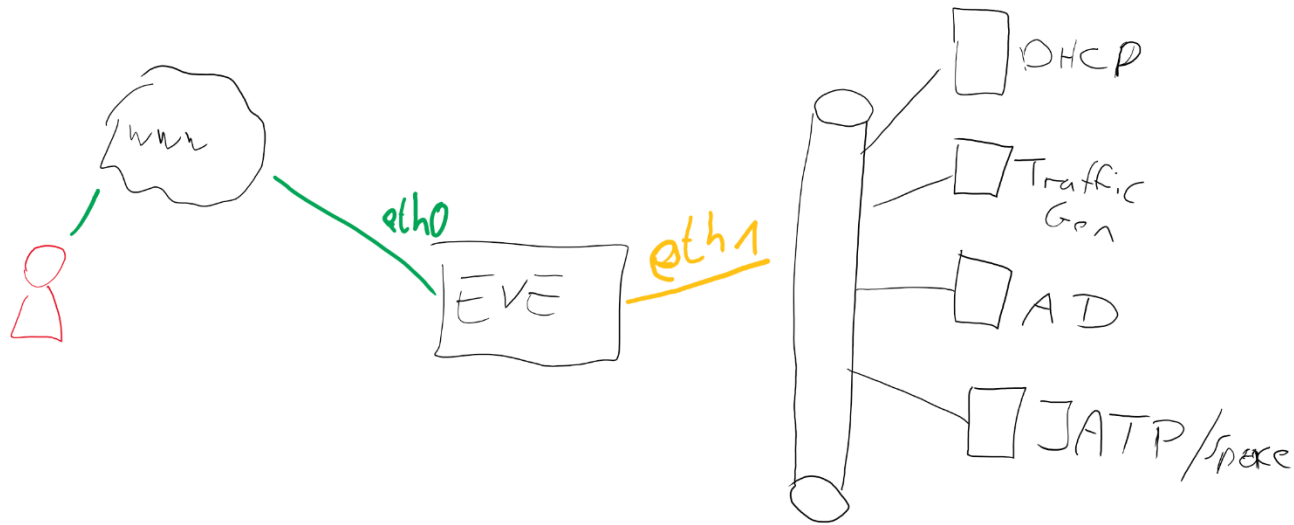
Example Topology



Design Considerations

- ▶ Number of nodes (CPU, RAM, HDD):
For each node, eve „copies“ the image and therefore needs harddisk 😊
- ▶ Number of images on EVE host | „Data Grave“ | Clean Policy
- ▶ Number of needed satellites - are any needed? Clustering needed?
Pro needed?
- ▶ How to Access your EVE-NG Server? VPN in Front? IP-Whitelisting?
- ▶ How many **concurrent** Users needed?
- ▶ Hardware that needs to talk to EVE / Separate Management Network?
- ▶ Backup?

Separate Link for Management Network



Design Considerations

- ▶ Number of nodes (CPU, RAM, HDD):
For each node, eve „copies“ the image and therefore needs harddisk 😊
- ▶ Number of images on EVE host | „Data Grave“ | Clean Policy
- ▶ Number of needed satellites - are any needed? Clustering needed?
Pro needed?
- ▶ How to Access your EVE-NG Server? VPN in Front? IP-Whitelisting?
- ▶ How many **concurrent** Users needed?
- ▶ Hardware that needs to talk to EVE / Separate Management Network?
- ▶ Backup?

Strike Plan for Today

- ▶ Get Console Access
- ▶ Mount iso
- ▶ Install Ubuntu / EVE-NG
- ▶ EVE-NG initial Setup

Our Scenario for the sessions

- ▶ Bare-Metal-Server „Master“ (HP)
Cheap eBay Server
- ▶ Nothing installed so far
- ▶ Access to virtual Console (to mount the iso-File)
- ▶ EVE-NG iso (Community Edition for this Session, Pro Edition for Sessions 2+3):
→ <https://www.eve-ng.net/index.php/download/>
- ▶ Minimum of 1 connected wired Port to access the EVE-NG repository





More Infos

- ▶ Youtube Video Series covering EVE-NG and Juniper:
<https://www.youtube.com/netchron>
- ▶ EVE-NG Youtube Channel:
https://www.youtube.com/channel/UCh-RxHfEpYzo2Sgflq4_vAA/videos
- ▶ EVE-NG Website:
<https://www.eve-ng.net/>
- ▶ EVE-NG Forum:
<https://www.eve-ng.net/forum/>
- ▶ EVE-NG Helpdesk (Live-Chat):
<https://www.eve-ng.net/index.php/live-helpdesk/>

Q&A

Christian Scholz ( @chsjuniper)

„That guy who loves Juniper and IPv6“

Sr. Consultant - Network & Security
[Axians Networks & Solutions]

JNPR Ambassador | JNCIE-SEC #374

Blog: www.jncie.eu

Mail: chs@ip4.de

Youtube: www.youtube.com/netchron/

