

Juniper Open Learning
TECHNICAL SERIES WEBCAST



Building a Juniper EVE-NG Lab Environment for Daily Usage

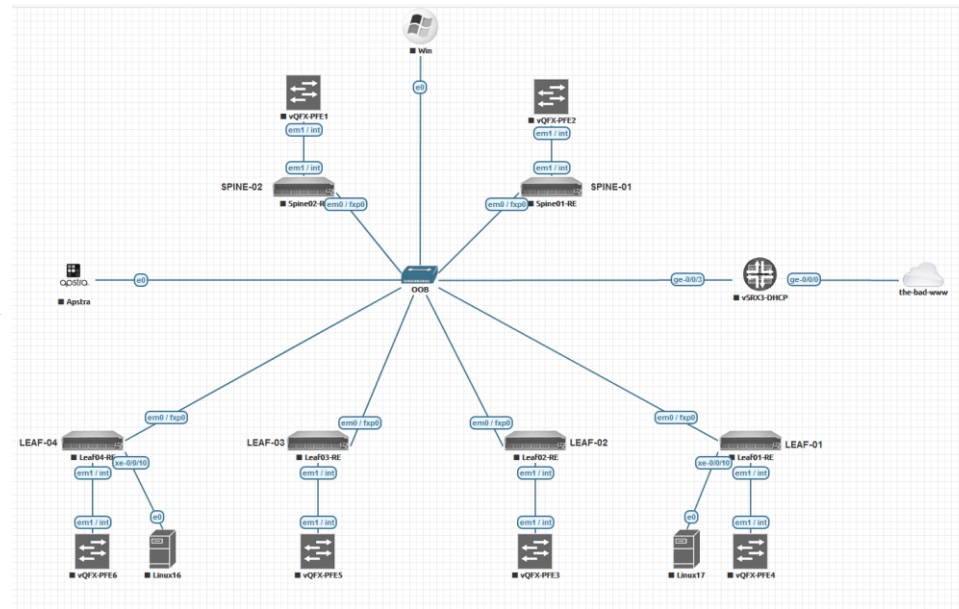
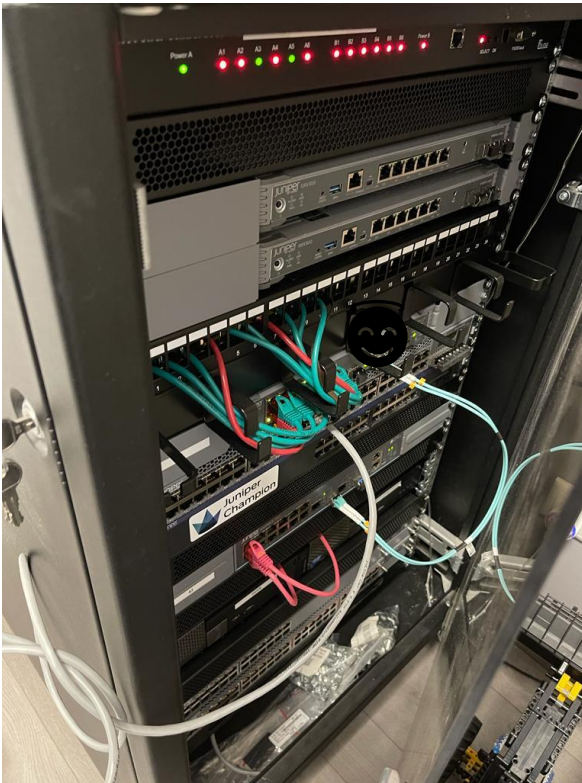
Wednesday, January 18th
8AM Pacific Time

The background features abstract, overlapping green geometric shapes, primarily triangles and polygons, in various shades of green, creating a modern and dynamic visual effect.

Why EVE-NG? | Why Virtual Labs?

Why EVE-NG | Why Virtual Labs

Save Power / Rackspace



Why EVE-NG | Why Virtual Labs

- ▶ Quickly Lab / Test a new Design
- ▶ GREAT for Certification 😊 → Combine with vLabs and AATP
- ▶ Get started for free with the Community Edition
- ▶ Vendor-Neutral! No Focus on a particular Vendor
- ▶ Extremely Flexible (Bare-Metal, VM | On-Prem | Colocation | Cloud)

EVE-NG Flavors

- ▶ Bare-Metal (best performance)



- ▶ VMware (best flexibility)



- ▶ Cloud (best „power-boost“ option)



Google Cloud

Fetching images

- ▶ 3 „base“ images: vMX (Router), vSRX (Firewall/Secure-Router), vQFX (Switch)
- ▶ Need an active Juniper account → can be created for free
- ▶ vMX:
<https://www.juniper.net/us/en/dm/vmx-trial-download.html>
Convert:
<https://www.eve-ng.net/index.php/documentation/howtos/howto-add-juniper-vmx-16-x-17-x/>
- ▶ vSRX:
<https://www.juniper.net/us/en/dm/download-next-gen-vsrx-firewall-trial.html>
Already qcow2 - upload and use :)
- ▶ vQFX:
<https://www.juniper.net/us/en/dm/free-vqfx10000-software.html>
Rename the PFE from qcow to qcow2 - that's it :)

Uploading to your Server

- ▶ `/opt/unetlab/addons/qemu/` → Main Folder for images (nodes)
- ▶ Files / Filenames / Folders need to have a certain format:
vmxvcp-
vmxvfp-
vqfxre-
vqfxpfe-
vsrxng-
- ▶ `virtioa.qcow2` or `hda.qcow2` (depends on the image) → `driver.kvmfile(qemu)`
- ▶ <https://www.eve-ng.net/index.php/documentation/howtos/>
Explains in detail how to convert the images
- ▶ `/opt/unetlab/wrappers/unl_wrapper -a fixpermissions`
makes sure the linux host permissions are correct (internally)

Pro Features - great for everyday usage

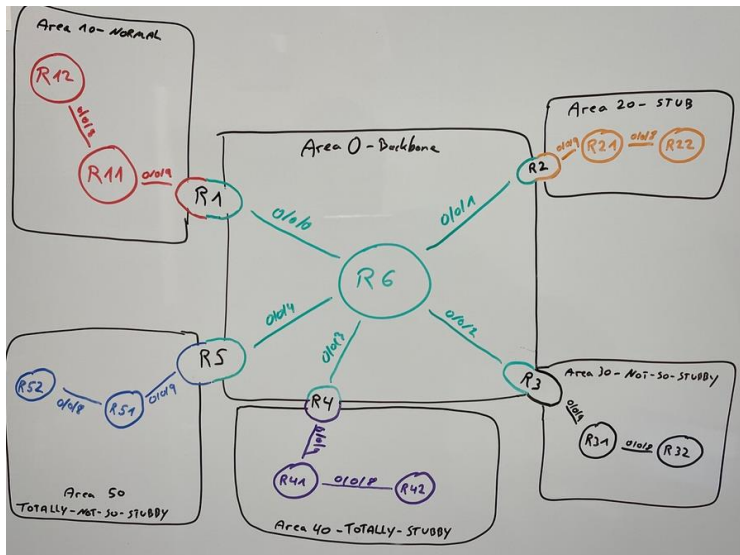
- ▶ Hot-Link-Add
- ▶ Upload PDF Files
- ▶ Packetloss / Jitter / Delay

Link Quality: VMX-VFP29 - VMX-VFP28

Interface	Delay (ms)	Jitter (ms)	Loss (%)	Rate(kbps)	Interface	Delay (ms)	Jitter (ms)	Loss (%)	Rate(kbps)
ge-0/0/8	0	0	0	0	ge-0/0/8	0	0	0	0

Apply Save Close

- ▶ Logical Maps



EVE-NG and Juniper - Lab Ideas

- ▶ Run vSRX, vMX and vQFX Standalone in EVE-NG (Trial)
- ▶ Run multiple vSRX in EVE and connect them to MIST
- ▶ Run APSTRA in EVE and do a DC-Demo with the vQFX
- ▶ Run vJATP in EVE and combine it with the SRX / vSRX
- ▶ Run the virtual MIST-Edge in EVE-NG and connect it to MIST
- ▶ Run JunOS-Space-SD and manage your vSRX'es
- ▶ Run the 128T Conductor and Routers in EVE-NG for SD-WAN Demos
- ▶ Run 128T Routers in EVE and connect it to MIST



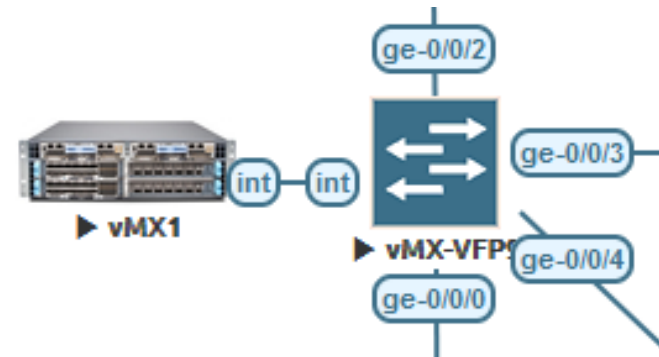
- ▶ Run vQFX in EVE and use it in MIST WA → NOPE!
- ▶ Create a Virtual-Chassis in EVE-NG with the vQFX → BIG NOPE!

What to do in case something goes wrong:



Pitfall 1: forgot to connect the „int“ Link

- ▶ Symptom:
 - ▶ ge- and xe- and et- interfaces do not come up ever
 - ▶ „show chassis fpc“ never shows any fpc „online“
- ▶ Cause:
 - ▶ „int“-Link between vCP and vFP is missing vMX and vQFX
- ▶ Solution:
 - ▶ Connect the VCP and VFP interfaces named „int“ back-to-back



Pitfall 2: deleted the em1 config

- ▶ Symptom:
- ▶ ge- and xe- and et- interfaces do not come up ever
- ▶ Cause:
- ▶ „Delete interfaces“ is often used when „staging“ the vQFX

```
set interfaces xe-0/0/70:2 unit 0 family inet dhcp vendor-id Juniper-qfx5100-48s-6q
set interfaces xe-0/0/70:3 unit 0 family inet dhcp vendor-id Juniper-qfx5100-48s-6q
set interfaces et-0/0/71 unit 0 family inet dhcp vendor-id Juniper-qfx10002-72q
set interfaces xe-0/0/71:0 unit 0 family inet dhcp vendor-id Juniper-qfx5100-48s-6q
set interfaces xe-0/0/71:1 unit 0 family inet dhcp vendor-id Juniper-qfx5100-48s-6q
set interfaces xe-0/0/71:2 unit 0 family inet dhcp vendor-id Juniper-qfx5100-48s-6q
set interfaces xe-0/0/71:3 unit 0 family inet dhcp vendor-id Juniper-qfx5100-48s-6q
set interfaces em0 unit 0 family inet dhcp
set interfaces em1 unit 0 family inet address 169.254.0.2/24
set forwarding-options storm-control-profiles default all
set protocols igmp-snooping vlan default
set vlans default vlan-id 1
```

- ▶ Solution:
- ▶ Copy em1 config and apply it after „delete interfaces“
- ▶ Better use „wildcard delete interface xe-* and et-*“ - keeps em1 link alive 😊

Pitfall 3: not enough resources (CPU / RAM)

- ▶ Symptom:
 - ▶ Multiple unexplainable errors / strange behavior in multiple ways
- ▶ Cause:
 - ▶ Device has not enough CPU / RAM to perform basic tasks
- ▶ Solution:
 - ▶ NEVER go below the recommendation from the template - save yourself the hassle

Pitfall 4: booting up everything at once

- ▶ Symptom:
- ▶ Lab takes literally forever to start
- ▶ Cause:
- ▶ Device takes WAY more resources during bootup and CPU is overwhelmed
- ▶ Solution:
- ▶ Use the „delay“-option to start the devices one after another



Startup configuration

None ▼

Satellite

master ▼

Delay (s)

0

Pitfall 5: eve-ception

- ▶ Symptom:
- ▶ Running EVE-NG on your Laptop in vmware Workstation and starting a lab is not working

- ▶ Cause:

Hardware

OS
(Windows)

Hypervisor
(Workstation)

Hypervisor
(KVM nested) [EVE]

Juniper
vDevice



- ▶ Solution:
- ▶ Don't use EVE-NG on your Laptop
Use a proper Server (Vmware, Cloud or Bare-Metal) and access it via your Webbrowser
Usually cheap to fetch on eBay

Pitfall 6: vQFX takes LC-Role

- ▶ Symptom:
 - ▶ All of a sudden your vQFX thinks it's a VirtualChassis (not working) and takes the LC-Role
- ▶ Cause:
 - ▶ Nasty bug in vQFX when connected to a shared network with other vQFX'es
 - ▶ All your vQFX have the same S/N - therefore the RE's try to connect to remote PFE's
- ▶ Solution:
 - ▶ Change Serial-Numbers of vQFX and don't connect them before



More Infos

- ▶ Youtube Video Series covering EVE-NG and Juniper:
<https://www.youtube.com/netchron>
- ▶ EVE-NG Youtube Channel:
<https://www.youtube.com/@eve-ng-emulatedvirtualenvi9759>
- ▶ EVE-NG Website:
<https://www.eve-ng.net/>
- ▶ EVE-NG Forum:
<https://www.eve-ng.net/forum/>
- ▶ EVE-NG Helpdesk (Live-Chat):
<https://www.eve-ng.net/index.php/live-helpdesk/>

Q&A

You missed a GREAT Q+A-Session



Christian Scholz ( @chsjuniper@mastodon.social)

„That guy who conquers the world with Juniper and IPv6“

Lead Architect - Juniper Enterprise Networks
[Axians Networks & Solutions]

JNPR Ambassador | JNCIE-SEC #374

Blog: jncie.eu

Mail: chs@ip4.de

Youtube: www.youtube.com/netchron/

Twitter: @chsjuniper

LinkedIn: <https://www.linkedin.com/in/chsjuniper/>